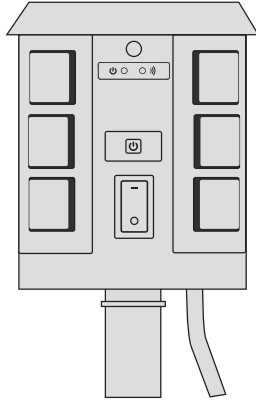


Outdoor Wi-Fi Yard Stake

INSTRUCTION GUIDE



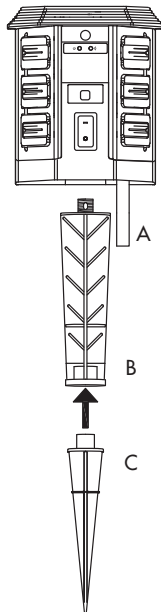
SPECIFICATIONS:
6 ft. (1.8 m) AWG 16/3 SJTW power cord.
ELECTRICAL RATINGS:
125V/ 60Hz/ 13A/ 1625W



INSTALLATION INSTRUCTIONS

CAUTION! The Yard Stake must **ONLY** be plugged into a three conductor GFCI protected outlet. After completion of the installation, the Yard Stake must be kept a minimum of 6 inches above ground level. Do not immerse in water. **DO NOT EXCEED RATED CAPACITY.**

1. Connect the two pieces of the yard stake together by screwing Lower Stake (C) into Upper Stake (B)
2. Attach the assembled stake to the Body (A) by screwing the top of Upper Stake (B) into the base of the Body. Be sure to firmly tighten the stake to the body before installing into the ground.
3. Insert the Stake 6" into the ground.
4. Press the switch to the "—" position. Power ON to unit.



***OPERATION:** Once assembled, plug the yard stake into a grounded outlet. (total wattage should not exceed 13 amp or 1625 watts)

SETUP INSTRUCTION



READ ALL INSTRUCTIONS before using the Wi-Fi Yard Stake.

RECOMMENDATION: The closer the Wi-Fi Yard Stake is located to a WiFi router during set-up, the better the signal strength will be for initial configuration and subsequent programming.

Mac address: If your router identifies by Mac address, please key in the code number shown in the code label of the unit. i.e., 3x:2x:7x:0x:Cx:Cx

Power Indicator

POWER BUTTON
Press this button to turn the Wi-Fi Yard Stake ON and OFF

RESET:
Also used to reset the Wi-Fi Yard Stake device (see instructions below)

Overcurrent Protector

Wi-Fi™ Status Indicator

LIGHT
BLINKING LIGHT
Wi-Fi Yard Stake is ready for programming

FAST BLINKING LIGHT
Wi-Fi Yard Stake cannot find a WiFi router. Please reset.

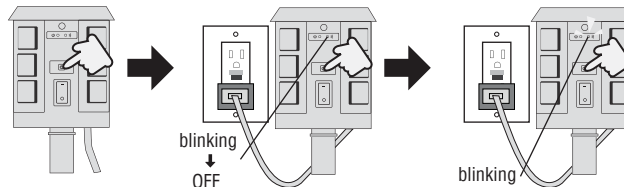
SOLID LIGHT:
Programming is finished and the Wi-Fi Yard Stake is now ready to be used via ECO Plugs APP

NO LIGHT:
Wi-Fi Yard Stake is rebooting to default settings

Receptacles (6) For controlled devices (Will only be controlled via ECO Plugs app as a group. CANNOT be controlled individually)

RESET THE Wi-Fi PLUG

This is how you perform a factory reset of the Wi-Fi Yard Stake



STEP 1
Press and hold the power button

STEP 2
While holding the power button and plug into the GFCI protected outlet, until the Wi-Fi indicator turns off, then release it.

STEP 3
Finished! You can now start setting up the ECO Plugs APP with the Wi-Fi Yard Stake

SMARTPHONE SETUP



DOWNLOAD THE ECO PLUGS APP:



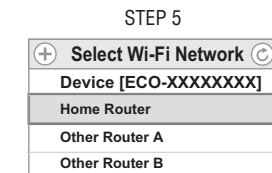
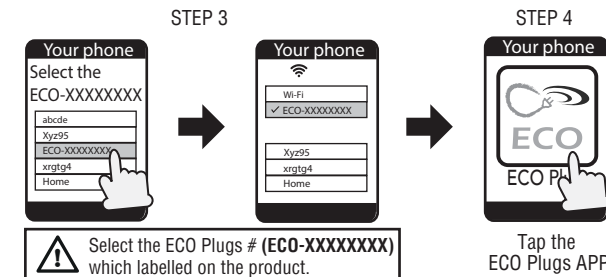
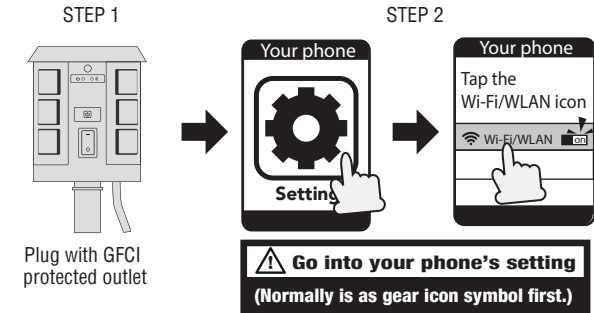
You can download the ECO Plugs App from either the Apple APP Store (iPhone) or the Google Play Store (Android)
Scan the QR Codes below or search for 'ECO Plugs'



(iOS 7 or higher)

(Version 4 or higher)

*If you purchase more than one ECO Yard Stake, setup each device one by one.



Select the Wi-Fi home router that you want to connect to the ECO Wi-Fi Yard Stake or tap (C) (EX: Home Router)



Fill in all your information.

*If this ECO-XXX network does not show in your list, perform a factory RESET of the Wi-Fi Yard Stake

*If your router does not show up in the list, press the + icon to manually enter your router's information

STEP 7

EX: USA

USA Canada Other

Enter Zip Code: [2142 (Cambridge)]

Name Device: [(Named This Device)]

Wi-Fi Router(WLAN):
[Home Router]

Enter Wi-Fi Router Password:
[Wi-Fi's password, if needed]

EX: CANADA

USA Canada Other

Phone Area Code: [416 (Toronto)]

Name Device: [(Named This Device)]

Wi-Fi Router(WLAN):
[Home Router]

Enter Wi-Fi Router Password:
[Wi-Fi's password, if needed]



Fill in Country, [Zip Code (USA Only)
Phone Area Code (CANADA Only)

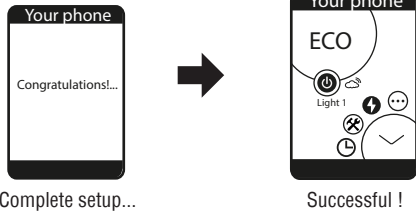
Name Device (Lamp, Lighting etc.) and Router Password, click the **SAVE SETTING** or **JOIN** button.

*iOS: If you can't find the **Join** button, please click in the password section.

*For Canada: Please select the Canada, entering the phone area code instead of zip code.

*Your smartphone should reconnect to your home router. If it does not, go back into your phone WiFi settings to connect back to it.

STEP 8



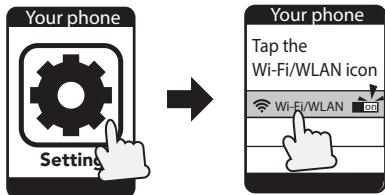
ADD MULTI Wi-Fi YARD STAKE TO THE APP

Repeat steps 1-8 for each additional device. Remember to give each device a different name (for example, Light 1, Light 2, etc.).

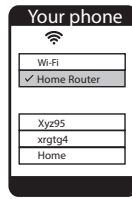
*Note: Each Wi-Fi Yard Stake has two receptacles that are controlled by APP. If you need to control more than two devices, you must add additional Wi-Fi Yard Stake to the app.

ADD MULTIPLE USERS TO THE ECO PLUGS

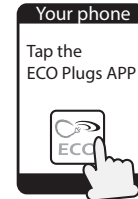
Repeat the steps below for each additional user



Tap iOS's Android's setting gear icon
(Not the ECO Plugs APP)



Link to the same router as used by the first smartphone (EX: Home Router)



* For cloud function. Refer to EXPLORE THE TIMER SETTING

CONTROL MULTIPLE DEVICES

*ONLY IF YOU HAVE MORE THAN ONE Wi-Fi YARD STAKE PROGRAMMED ON THE ECO PLUGS APP: You can choose which ECO Wi-Fi Yard Stake (EX: Light 1, Light 2, Light 3, etc.) you want to control by sliding the desired icon to the lower left position.

The ECO Wi-Fi Yard Stake name (EX: Light 1, Light 2, etc.) will change color from white to yellow. The chosen device is now able to be programmed or edited; such as changing timer settings, setting security settings, updating the cloud service, etc.

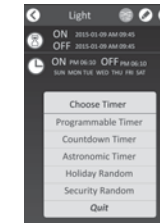
*Note: YOU CAN CONNECT TO A MAXIMUM OF TWELVE (12) ECO Wi-Fi YARD STAKES VIA THE ECO PLUGS APP.



EXPLORE THE ECO PLUGS APP ICONS

- More** - Learn more about ECO Plugs app, including a Q & A section.
- Electric Bill** - Function is not available on this device.
- Setting** - Setting your Wi-Fi Yard Stake, such as transfer local Wi-Fi into cloud mode, or rename the device.
- Timer** - Setting On/ Off programs (up to a maximum of 12 Custom On/ Off events).
- Mail Box** - Welcome share any feedback on this App.

EXPLORE THE TIMER FUNCTION



Programmable Timer - Setting On/ Off events. Select ON time and OFF time. (EX: ON - 06:30PM OFF - 05:00AM) Can also select what day(s) of the week it effects.

COUNTDOWN TIMER - You will select an ON date (EX: 03/29/17) and time (EX: 07:30PM) and an OFF date (EX: 04/02/17) and time (EX: 05:00AM)

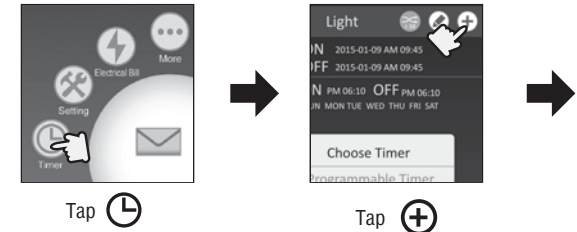
ASTRONOMIC TIMER - Wi-Fi Yard Stake will turn ON/OFF at sunset or sunrise. Can also select what day(s) of the week it effects.

HOLIDAY RANDOM - The Wi-Fi Yard Stake will turn ON/OFF at random times based on three simple settings (Night, Day, All Day)

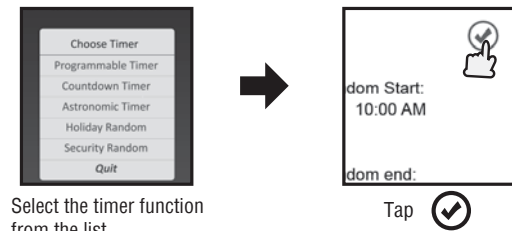
SECURITY RANDOM - The Wi-Fi Yard Stake will turn ON/OFF at random times between a set of selected start and end dates and times.

PROGRAMMABLE RANDOM - This icon increases or decreases the time of your ON/OFF events by 30 minutes

PROGRAMMING THE TIMER



*When the device change color from white to yellow

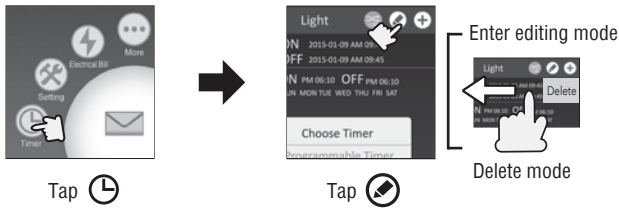


*When setting up a new timer function, make sure the Wi-Fi Yard Stake is connected to your home/office router, and that the Wi-Fi Yard Stake is plugged into a 120Vac wall outlet. The Wi-Fi Yard Stake will also remember programmed timers when removed from power.

NOTE: If you preprogram it and move it to a different area with completely different WiFi signals, the Wi-Fi Yard Stake will attempt to connect to one of these unsuccessfully. This will make the preprogrammed timer NOT function. In this case, you may have to RESET the Wi-Fi Yard Stake and set it to a router in the area.

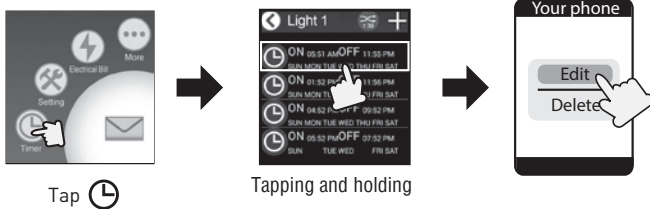
EDITING THE PROGRAMMED TIMER

iOS



*When the device change color from white to yellow

Android

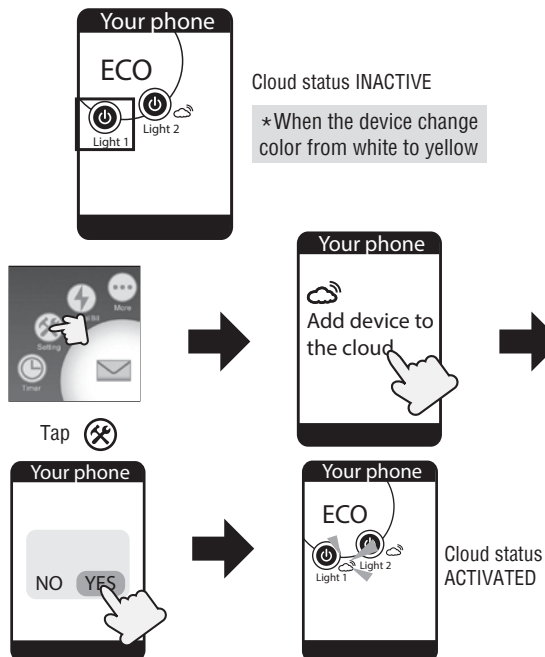


*When the device change color from white to yellow

EXPLORE THE TIMER SETTING

DST - Daylight Saving Time : The time will automatically move ahead 1 hour on Sunday of the second week of March @ 02:00am, and will automatically adjust back 1 hour on Sunday of the first week in November @ 02:00am every year.

CLOUD SERVICE - Activates remote access function of the Wi-Fi Yard Stake through 3G, 4G, LTE, public WiFi, or other WiFi routers. You can then access your Wi-Fi Yard Stake from almost anywhere in the world!



AMAZON ALEXA SETUP

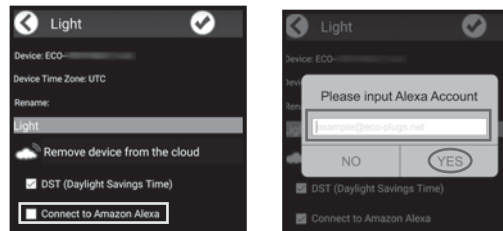
Connecting your ECO Plugs device to Amazon Alexa

Step 1
Open the ECO PLUGS app and click on "Settings"

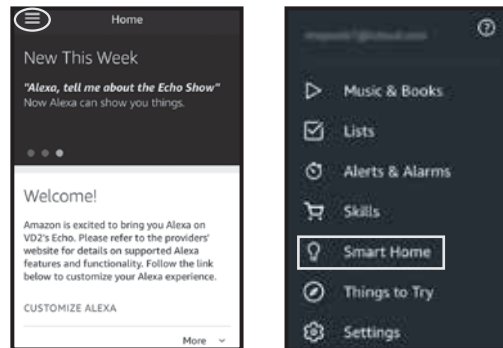
(If you have multiple devices, slide the desired device icon to the lower left until the desired device's name changes to yellow)



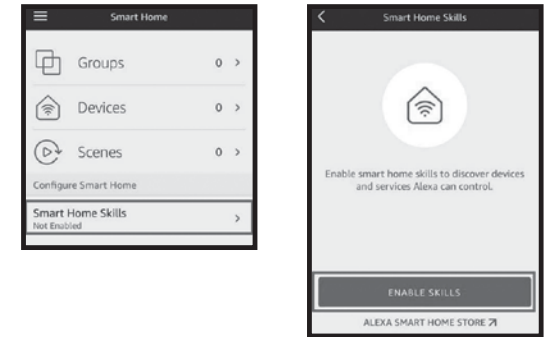
Step 2
Tap "Connect to Amazon Alexa" Enter your Alexa account (This is the email address associated with your Alexa account) Then tap "YES"



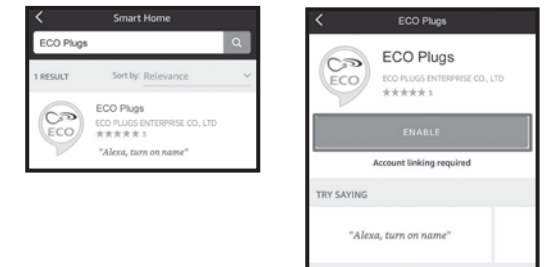
Step 3
Open the Amazon Alexa app. Go to the menu button in the top left corner and click on "Smart Home"



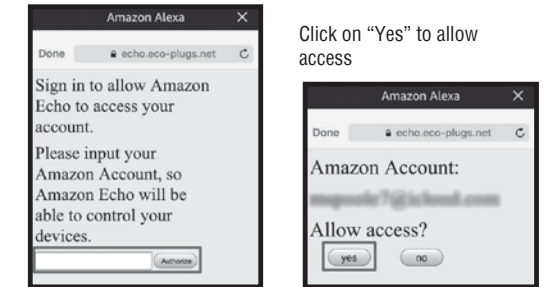
Step 4
Tap "Smart Home Skills", then click on "Enable Skills"



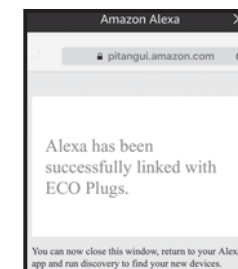
Step 5
Search for "ECO Plugs" Click on "Enable"



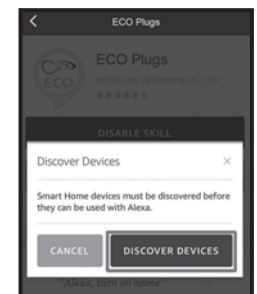
Step 6
Enter your Amazon Alexa Account (This is the email address associated with your Alexa account) Then tap "Authorize"



Step 7
Link SUCCESSFUL!
Go back to the Amazon Alexa App

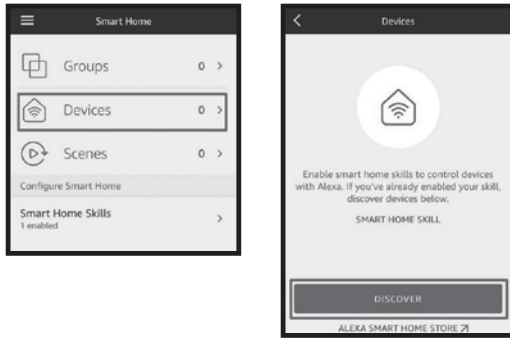


Step 8
Tap "Discover Devices"



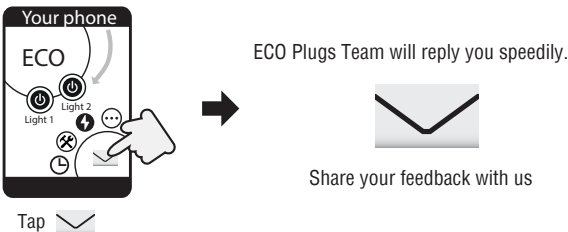
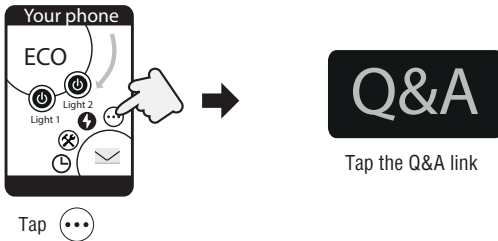
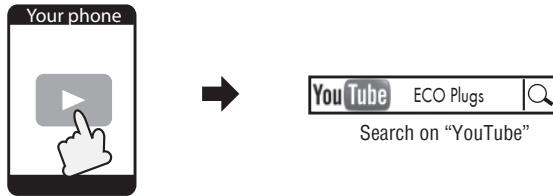
Step 9

If the device is NOT discovered at step 8:
In the Amazon Alexa app, go to the menu in the top left corner and click on "Smart Home". Then, click on "Devices", and then "Discover".



MORE INFORMATION

If you have further inquires regarding the set up Wi-Fi Plug, please search "ECO Plugs" on the YouTube, or send an email to us.



Federal Communications Commission Interference Statement

This equipment has been tested and found to comply with the limits for Class B digital device, pursuant to part 15 of the FCC rules. These limits are designed to provide reasonable protection against harmful interference in a residential installation. This equipment generates, uses and can radiate radio frequency energy and, if not installed and used in accordance with the instructions, may cause harmful interference to radio or television reception, which can be determined by turning the equipment off and on, the user is encouraged to try to correct the interference by one or more of the following measures:

- Reorient or relocate the receiving antenna.
- Increase the separation between the equipment and the receiver.
- Connect the equipment into an outlet on a circuit different from that to which the receiver is connected.
- Consult the dealer or an experienced radio/TV technician for help.

This device complies with Part 15 of the RCC Rules. Operation is subject to the following two conditions:
1. This device may not cause harmful interference.
2. This device must accept any interference received, including interference that may cause undesired operation of the device.

FCC Caution: Any changes or modifications not expressly approved by the party responsible for compliance could void the user's authority to operate this equipment.

FCC Radiation Exposure Statement:
This equipment complies with FCC radiation exposure limits set forth for an uncontrolled environment. This equipment should be installed and operated with minimum distance 20cm between the radiator and your body.

Contains FCC ID: PAGECO-PLUGS

SAFETY INFORMATION

WARNING: Disregarding Cautions may cause damage, fire, or fatal shock. When using outdoor electrical products, basic safety precautions should always be followed to reduce the risk of fire, electric shock, and personal injury.

CAUTION:

- Risk of Fire. Not for permanent installation. Use only with outdoor equipment, Christmas-tree, or other seasonal decorative-lighting products having a total of 13 Ampere maximum. Do not install or use this product for more than a 90-day period.
- If using Christmas tree or decorative-lighting products that are not marked with an ampere rating, connect no more than 140 screw-base lamps (C7 or C9) or 12 strings with midget (push-in) lamps to this cord set.
- Cord sets must be plugged into a GFCI-protected receptacle.
- If using an outdoor-use cord set for an extended period of time (greater than 90 days) please consider hard wiring a permanent outdoor-use receptacle rated for year-round use in the area that power is needed. Please contact a licensed electrician for proper installation of permanent wiring.
- After completion of installation, the connector shall be maintained a minimum of 6 inches above ground
- SUITABLE FOR INDOOR/OUTDOOR USE – STORE INDOORS WHILE NOT IN USE.
- CAUTION: PLUG INTO GROUND FAULT PROTECTED RECEPTACLE ONLY.
- For temporary outdoor use – not to exceed 90 days; store indoors after use. This is not a surge protector. Do not overload the outlet (maximum: 13 amp, 1625 watts). Be sure to plug the power strip into a 125 volt GFCI rated receptacle. Do not coil the power cord when in service. Never use frayed or damaged cord.

CARE AND MAINTENANCE

- Store indoors in dry location.
- Always unplug when not in use.
- Do not unplug by pulling on cord.

Apple is a registered trademark of Apple Inc.
Android, Google Play and the Google Play logo are trademarks of Google Inc.
iOS is a trademark or registered trademark of Cisco in the US and other countries and is used under license.

The Wi-Fi certified logo and Wi-Fi® are registered trademarks of Wi-Fi Alliance.

Made in China