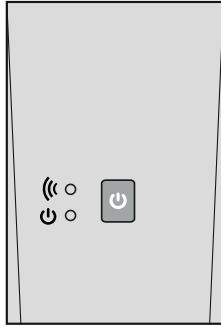


Indoor Wi-Fi Outlet

INSTRUCTION GUIDE



125 V ac, 60 Hz, 15 A Resistive,
15 A General Use, 1000 W Tungsten,
500VA Electronic Ballast,
120 V ac, 60 Hz, 8.3 A Ballast, 1/2 HP.



SETUP INSTRUCTION



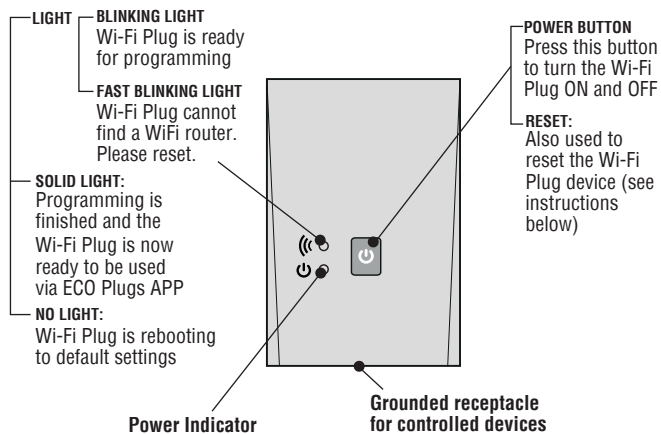
CAUTION! INDOOR USE ONLY! Do not use Wi-Fi Plug in outdoors, damp, or wet locations.

READ ALL INSTRUCTIONS before using the Wi-Fi Plug.

RECOMMENDATION: The closer the Wi-Fi Plug is located to a WiFi router during set-up, the better the signal strength will be for initial configuration and subsequent programming.

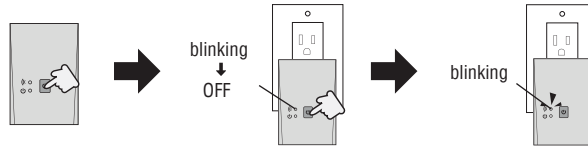
Mac address: If your router identifies by Mac address, please key in the code number shown in the code label of the unit. i.e., 3x:2x:7x:0x:Cx:Cx

Wi-Fi™ Status Indicator



RESET THE Wi-Fi PLUG

This is how you perform a factory reset of the Wi-Fi Plug



- STEP 1**
Press and hold the power button
- STEP 2**
While holding the power button, plug the Wi-Fi Plug into a 120V wall outlet, THEN release the power button when the light turns off.
- STEP 3**
Finished! You can now start setting up the ECO Plugs APP with the Wi-Fi Plug

SMARTPHONE SETUP

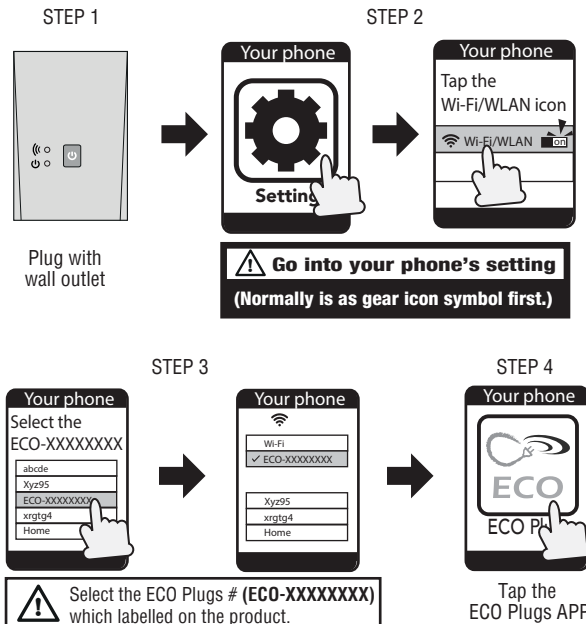


DOWNLOAD THE ECO PLUGS APP: ECO Plugs

You can download the ECO Plugs App from either the Apple APP Store (iPhone) or the Google Play Store (Android)
Scan the QR Codes below or search for 'ECO Plugs'



*If you purchase more than **one ECO Plug**, setup each device **one by one**.



STEP 5

<input checked="" type="radio"/> USA	<input type="radio"/> Canada	<input type="radio"/> Other
Device [ECO-XXXXXXXX]		
Home Router		
Other Router A		
Other Router B		

Select the Wi-Fi home router that you want to connect to the ECO Wi-Fi Plug or tap (📶) (EX: Home Router)

STEP 6

<input type="checkbox"/> USA	<input type="checkbox"/> Canada	<input type="checkbox"/> Other
Enter Zip Code: _____		
Name Device: (Named This Device)		
Wi-Fi Router(WLAN):		
Home Router		
Enter Wi-Fi Router Password: (Wi-Fi's password, if needed)		

Fill in all your information.

*If this ECO-XXX network does not show in your list, perform a factory RESET of the Wi-Fi Plug

*If your router does not show up in the list, press the **+** icon to manually enter your router's information

STEP 7

EX: USA

<input checked="" type="checkbox"/> USA	<input type="checkbox"/> Canada	<input type="checkbox"/> Other
Enter Zip Code: 2142 (Cambridge)		
Name Device: (Named This Device)		
Wi-Fi Router(WLAN):		
Home Router		
Enter Wi-Fi Router Password: (Wi-Fi's password, if needed)		

EX: CANADA

<input type="checkbox"/> USA	<input checked="" type="checkbox"/> Canada	<input type="checkbox"/> Other
Phone Area Code: 416 (Toronto)		
Name Device: (Named This Device)		
Wi-Fi Router(WLAN):		
Home Router		
Enter Wi-Fi Router Password: (Wi-Fi's password, if needed)		



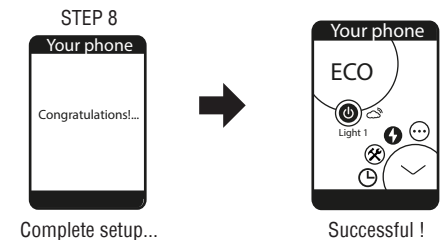
Fill in Country, [Zip Code (USA Only)
Phone Area Code (CANADA Only)

Name Device (Lamp, TV, small appliances) and Router Password, click the **SAVE SETTING** or **JOIN** button.

***iOS:** If you can't find the **Join** button, please click in the password section.

***For Canada:** Please select the Canada, entering the phone area code instead of zip code.

*Your smartphone should reconnect to your home router. If it does not, go back into your phone WiFi settings to connect back to it.



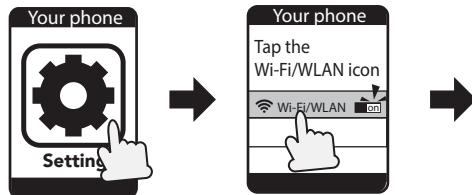
ADD MULTI Wi-Fi PLUG TO THE APP

Repeat steps 1-8 for each additional device. Remember to give each device a different name (for example, Light 1, Light 2, etc.).

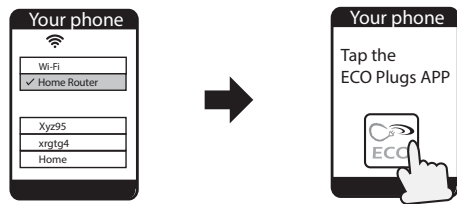
***Note:** each controlled device requires a separate ECO Wi-Fi Plug.

ADD MULTIPLE USERS TO THE ECO PLUGS

Repeat the steps below for each additional user



Tap iOS's setting gear icon
Android's setting gear icon
(Not the ECO Plugs APP)



Link to the same router as used by the first smartphone (EX: Home Router)

* For **cloud function**. Refer to EXPLORE THE TIMER SETTING

CONTROL MULTIPLE DEVICES

***ONLY IF YOU HAVE MORE THAN ONE Wi-Fi PLUG PROGRAMMED ON THE ECO PLUGS APP:** You can choose which ECO Wi-Fi Plug (EX: Light 1, Light 2, Light 3, etc.) you want to control by sliding the desired icon to the lower left position.

The ECO Wi-Fi Plug name (EX: Light 1, Light 2, etc.) will change color from **white** to **yellow**. The chosen device is now able to be programmed or edited; such as changing timer settings, setting security settings, updating the cloud service, etc.

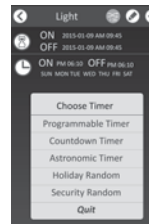
***Note:** YOU CAN CONNECT TO A MAXIMUM OF TWELVE (12) ECO Wi-Fi PLUGS VIA THE ECO PLUGS APP.



EXPLORE THE ECO PLUGS APP ICONS

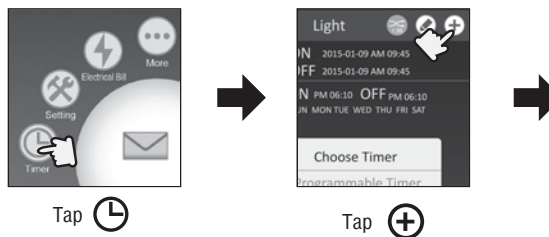
- More** - Learn more about ECO Plugs app, including a Q & A section.
- Electric Bill** - Function is not available on this device.
- Setting** - Setting your Wi-Fi Plug, such as transfer local Wi-Fi into cloud mode, or rename the device.
- Timer** - Setting On/ Off programs (up to a maximum of 12 Custom On/ Off events).
- Mail Box** - Welcome share any feedback on this App.

EXPLORE THE TIMER FUNCTION

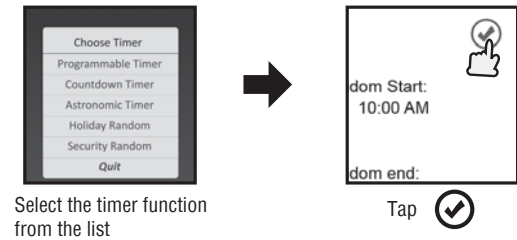


- Programmable Timer** - Setting On/ Off events. Select ON time and OFF time. (EX: ON - 06:30PM OFF - 05:00AM) Can also select what day(s) of the week it effects.
- COUNTDOWN TIMER** - You will select an ON date (EX: 03/29/17) and time (EX: 07:30PM) and an OFF date (EX: 04/02/17) and time (EX: 05:00AM)
- ASTRONOMIC TIMER** - Wi-Fi plug will turn ON/OFF at sunset or sunrise. Can also select what day(s) of the week it effects.
- HOLIDAY RANDOM** - The Wi-Fi plug will turn ON/OFF at random times based on three simple settings (Night, Day, All Day)
- SECURITY RANDOM** - The Wi-Fi plug will turn ON/OFF at random times between a set of selected start and end dates and times.
- PROGRAMMABLE RANDOM** - This icon increases or decreases the time of your ON/OFF events by 30 minutes

PROGRAMMING THE TIMER



*When the device change color from white to yellow



Select the timer function from the list

Tap

*When setting up a new timer function, make sure the Wi-Fi plug is connected to your home/office router, and that the Wi-Fi plug is plugged into a 120Vac wall outlet. The Wi-Fi plug will also remember programmed timers when removed from power.

NOTE: If you preprogram it and move it to a different area with completely different WiFi signals, the Wi-Fi plug will attempt to connect to one of these unsuccessfully. This will make the preprogrammed timer NOT function. In this case, you may have to RESET the Wi-Fi plug and set it to a router in the area.

EDITING THE PROGRAMMED TIMER

iOS



*When the device change color from white to yellow

Android

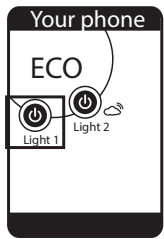


*When the device change color from white to yellow

EXPLORE THE TIMER SETTING

DST - Daylight Saving Time : The time will automatically move ahead 1 hour on Sunday of the second week of March @ 02:00am, and will automatically adjust back 1 hour on Sunday of the first week in November @ 02:00am every year.

CLOUD SERVICE - Activates remote access function of the Wi-Fi plug through 3G, 4G, LTE, public WiFi, or other WiFi routers. You can then access your Wi-Fi plug from almost anywhere in the world!

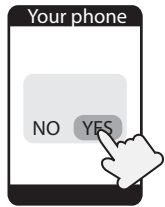
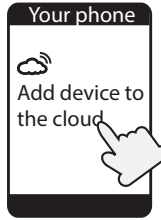


Cloud status INACTIVE

*When the device change color from white to yellow



Tap



Cloud status ACTIVATED

AMAZON ALEXA SETUP

Connecting your ECO Plugs device to Amazon Alexa

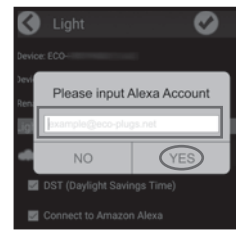
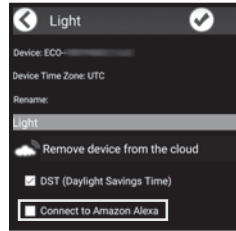
Step 1
Open the ECO PLUGS app and click on "Settings"

(If you have multiple devices, slide the desired device icon to the lower left until the desired device's name changes to yellow)



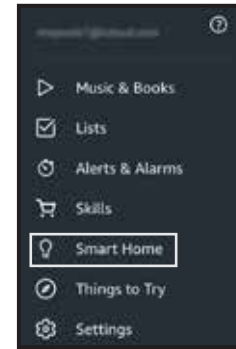
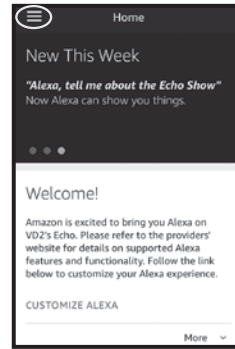
Step 2

Tap "Connect to Amazon Alexa" Enter your Alexa account
(This is the email address associated with your Alexa account)
Then tap "YES"



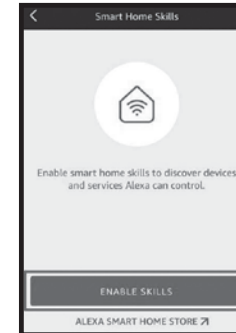
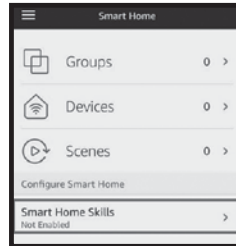
Step 3

Open the Amazon Alexa app.
Go to the menu button in the top left corner and click on "Smart Home"



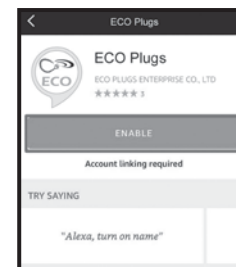
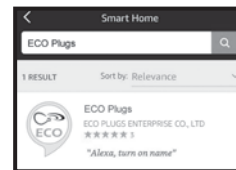
Step 4

Tap "Smart Home Skills", then click on "Enable Skills"



Step 5

Search for "ECO Plugs" Click on "Enable"



Step 6

Enter your Amazon Alexa Account
(This is the email address associated with your Alexa account)
Then tap "Authorize"

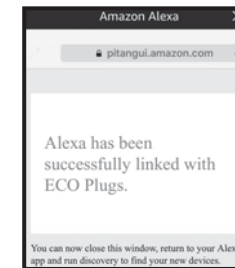


Click on "Yes" to allow access



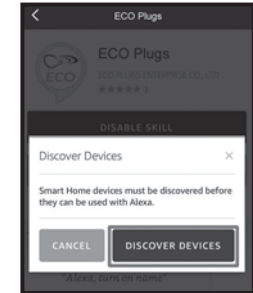
Step 7

Link SUCCESSFUL!
Go back to the Amazon Alexa App



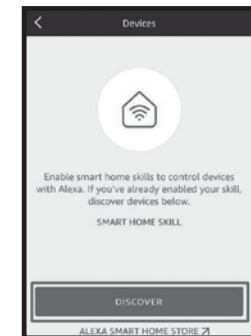
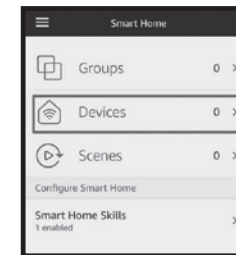
Step 8

Tap "Discover Devices"



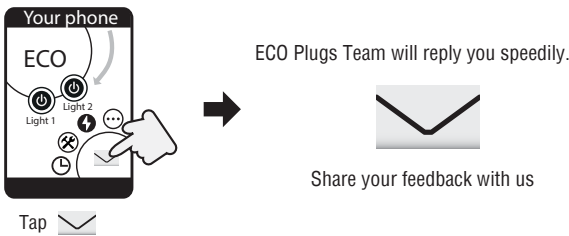
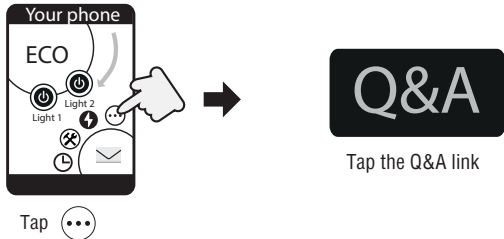
Step 9

If the device is NOT discovered at step 8:
In the Amazon Alexa app, go to the menu in the top left corner and click on "Smart Home". Then, click on "Devices", and then "Discover".



MORE INFORMATION

If you have further inquires regarding the set up Wi-Fi Plug, please search "ECO Plugs" on the YouTube, or send an email to us.



FCC Radiation Exposure Statement:

This equipment complies with FCC radiation exposure limits set forth for an uncontrolled environment. This equipment should be installed and operated with minimum distance 20cm between the radiator and your body.

Contains FCC ID: PAGECO-PLUGS

Apple is a registered trademark of Apple Inc.

Android, Google Play and the Google Play logo are trademarks of Google Inc.

iOS is a trademark or registered trademark of Cisco in the US and other countries and is used under license.

The Wi-Fi certified logo and Wi-Fi® are registered trademarks of Wi-Fi Alliance.

Made in China

Federal Communications Commission Interference Statement

This equipment has been tested and found to comply with the limits for Class B digital device, pursuant to part 15 of the FCC rules. These limits are designed to provide reasonable protection against harmful interference in a residential installation. This equipment generates, uses and can radiate radio frequency energy and, if not installed and used in accordance with the instructions, may cause harmful interference to radio or television reception, which can be determined by turning the equipment off and on, the user is encouraged to try to correct the interference by one or more of the following measures:

- Reorient or relocate the receiving antenna.
- Increase the separation between the equipment and the receiver.
- Connect the equipment into an outlet on a circuit different from that to which the receiver is connected.
- Consult the dealer or an experienced radio/TV technician for help.

This device complies with Part 15 of the FCC Rules. Operation is subject to the following two conditions:

1. This device may not cause harmful interference.
2. This device must accept any interference received, including interference that may cause undesired operation of the device.

FCC Caution: Any changes or modifications not expressly approved by the party responsible for compliance could void the user's authority to operate this equipment.